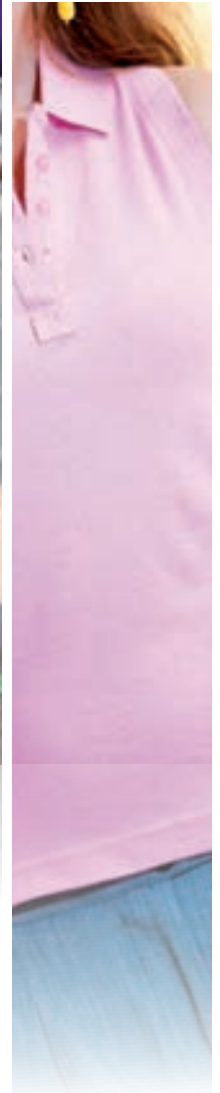
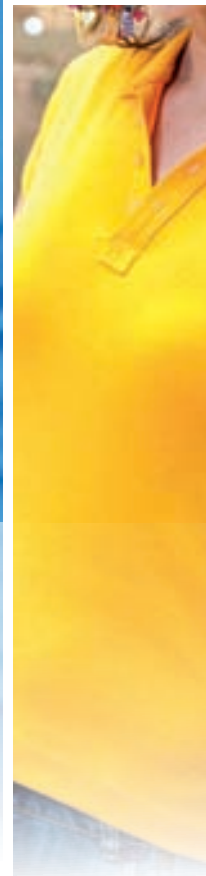
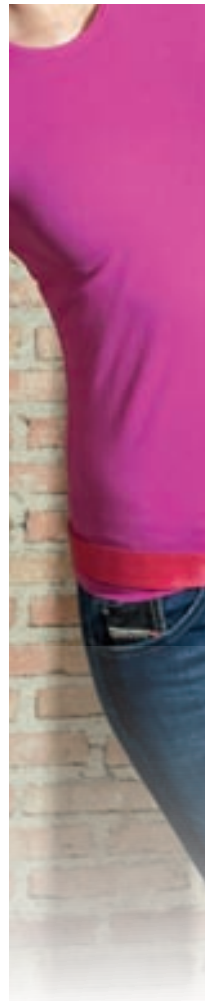


feel it



COLLECTION 2010



JHK Trader 2010

Como en años anteriores JHK se presenta en el mercado europeo como alternativa ideal en el marco del textil.

Tras ocho años de recorrido, nuestra marca está ya consolidada en el sector promocional, siendo considerada como una de las principales opciones en la elección del producto básico.

Variedad de modelos, amplia paleta de colores, magnífica relación precio-calidad, la colección JHK 2010 cubre al máximo las necesidades promocionales de las empresas. Tanto en los clásicos, camisetas, polos, sudaderas, en infantil y adulto, como en la línea Urban, enfocada principalmente a camisetas de hombre y mujer de uso cotidiano en distintos momentos de la semana, todas las prendas consiguen el confort máximo al vestirlas, cuidando detalles y acabados que aportan a la ropa un aspecto moderno e informal.

Al utilizar JHK, el resultado óptimo está garantizado.

En 2010 JHK apuesta por una nueva prenda que no dejará indiferente al consumidor dada su calidad y precio: la "Summer-■", TSRA 140. Una nueva estrella de JHK.

One more year JHK comes into the European market as the ideal alternative for the customers.

A journey of eight years has given our brand the support of being already consolidated in the promotional sector, becoming as one of the main options to choose the basic product.

Variety of styles, wide palette of colours, great relationship between price and quality, the JHK 2010 collection covers up to the maximum all the promotional needs of the companies. Both, classic garments, t-shirts, polos, sweatshirts, kids & adult, and Urban line, mainly focused on men and women t-shirts to be dressed in different moments of daily life, all of the collection is comfortable to wear, and takes care of the small details which give the clothes a modern and casual image.

When using JHK, the optimum result is granted.

2010 JHK catalogue brings a new garment no one customer will be indifferent to it, become of its price and quality: the "Summer-■", TSRA 140. A new star in JHK.



Índice / Index

REGULAR LINE

Camisetas / T-Shirt	
TSRA 140 / Summer-■	4-5
TSRA 150 / Regular T-Shirt	6-7
TSRL 150 / Regular Lady	8-9
TSRA 190 / Premium T-Shirt	10-11
TSRA 150 LS / Regular T-Shirt LS	20
TSRL 150 LS / Regular Lady LS	21

Polos	
PORA 200 / Regular Polo	12-13
POPL 200 / Lady Polo Piqué	14-15
PIQUÉ 220 / Polo Piqué 220	16-17
PORA 180 WK / Worker Polo	18
PORA 200 LS / Regular Polo LS	19
PORL 220 / Lady Polo	22
POUL 220 / Lady Polo CS	23

Infantil / Kids	
TSRB 150 / Baby	36-37
TSRK 150 / Kid T-Shirt	38-39
TSRK 190 / Premium T-Shirt	40-41
TSRK 150 LS / Kid T-Shirt LS	44
PKID 200 / Kid Polo	42-43
PKID 200 LS / Kid Polo LS	45
SWRK 280 / Kid Sweatshirt	46
FLRK 300 / Kid Polar Fleece	47

Sudaderas / Sweatshirt	
SWRA 280 / Sweatshirt	28-29
SWUL 300 / Hooded Sweater Lady	30-31
SWUA HOOD / Hooded Sweater	30-31
SWRA ZIP / Half Zip Sweatshirt	32

Camisas / Shirt	
<i>Hombre / Men</i>	
SHRA Casual / Regular Shirt	24-25
SHRA S/S / Regular Shirt SS	24-25
<i>Mujer / Lady</i>	
SHRA Lady / Regular Shirt Lady	26-27
SHRA Lady S/S / Regular Shirt Lady SS	26-27

Exterior / Outdoor	
FLRA 300 / Polar Fleece	33
JCUA Dakota / Dakota Jacket	34
JCUA Wind / Windbreaker	35

URBAN LINE

Camisetas Hombre / Men T-Shirt	
TSUA 150 / Urban 150	48-49
TSUA PICO / Urban 150 V-Neck	48-49
TSUA WCUP / World Cup	50
TSUA SPORT / Urban Sport	51
TSUA TRNT / Urban Tirantes	52-53
TSUA STRP / Urban Strap	52-53

Camisetas Mujer / Lady T-Shirt	
TSUL ARB / Aruba	54
TSUL SAM / Samoa	55
TSUL 260 / Madeira	56
TSUL BAH / Bahamas	57
TSUL BSG / Basic Girl	58
TSUL 1X1 / Malta	59
TSUL CRT / Creta	60
TSUL JAM / Jamaica	61
TSUL SCL / Sicilia	62
TSUL IBZ / Ibiza	63

Edición Especial / Special Edition	64-65
Paleta De Colores / Palette Of Colours	66-67





Summer-T

REF. TSRA 140



10



100

Camiseta manga corta. Tejido tubular.
Doble costura en cuello, mangas y bajo.
Refuerzo de hombro a hombro. Cuello de lycra.
100% algodón cardado preencogido.









Gramaje: 140 - 145 gr.
Tallas: XS / S / M / L / XL / XXL / 3XL

*Consultar Disponibilidad

Adult short sleeve T-shirt. Tubular fabric.
Double stitch on collar, sleeves and bottom
Shoulder to shoulder tape. Lycra rib neck.
100% preshrunk carded cotton.

Weight: 140 - 145 gsm.
Sizes: XS / S / M / L / XL / XXL / 3XL

*Check Availability

-  BK
BLACK
-  NY
NAVY
-  RB
ROYAL BLUE
-  WH
WHITE
-  RD
RED
-  OR
ORANGE
-  KG
KELLY GREEN
-  AS
ASH MELANGE





Regular T-Shirt

REF. TSRA 150



Camiseta manga corta. Tejido tubular. Doble costura en cuello, mangas y bajo. Refuerzo de hombro a hombro. Cuello de lycra. 100% algodón cardado preencogido.

Gramaje: 150 - 155 gr.
Tallas: XS / S / M / L / XL / XXL / 3XL
3XL - XS (BK, NY, RB, WH, RD, OR, SY)

Adult short sleeve T-shirt. Tubular fabric. Double stitch on collar, sleeves and bottom. Shoulder to shoulder tape. Lycra rib neck. 100% preshrunk carded cotton.

Weight: 150 - 155 gsm.
Sizes: XS / S / M / L / XL / XXL / 3XL
3XL - XS (BK, NY, RB, WH, RD, OR, SY)



	BK BLACK		PK PINK
	NY NAVY		RD RED
	DN DENIM		BC BRICK
	RB ROYAL BLUE		OR ORANGE
	AZ AZZURE		PH PEACH
	TU TURQUOISE		CH CHOCOLATE
	PU PURPLE		BR BROWN
	LV LAVANDER		SA SAND
	SK SKY BLUE		BG FOREST GREEN
	IB ICE BLUE		FG BOTTLE GREEN
	WH WHITE		KH KHAKE
	BU BURGUNDY		AR ARMY
	RP RASPBERRY		KG KELLY GREEN
	FU FUCSIA		LM LIME



	PT PISTACHIO	new colors '10 nuevos colores '10	
	SY GOLD		WR WARM RED
	LY LIGHT YELLOW		TG TANGERINE
	GF GRAPHITE		ZC ZINC
	GM GREY MELANGE		
	AS ASH MELANGE		



Regular Lady

REF. TSRL 150



10





















100

Camiseta chica manga corta.
Ligeramente entallada. Punto liso.
100% algodón peinado.

Gramaje: 145 - 150 gr.
Tallas: S / M / L / XL

Ladies short sleeve T-shirt.
Body fitted. Single jersey.
100% combed cotton.

Weight: 145 - 150 gsm.
Sizes: S / M / L / XL

-  **BK**
BLACK
-  **NY**
NAVY
-  **RB**
ROYAL BLUE
-  **AZ**
AZZURE
-  **TU**
TURQUOISE
-  **PU**
PURPLE
-  **LV**
LAVANDER
-  **SK**
SKY BLUE
-  **WH**
WHITE
-  **RP**
RASPBERRY
-  **FU**
FUCSIA
-  **PK**
PINK
-  **RD**
RED
-  **OR**
ORANGE
-  **CH**
CHOCOLATE
-  **KG**
KELLY GREEN
-  **LM**
LIME
-  **SY**
GOLD



new colors '10
nuevos colores '10

-  **BG**
BOTTLE GREEN





Premium T-Shirt

REF. TSRA 190



Camiseta manga corta. Tejido tubular.
Cuello lycra.
Doble costura en cuello, mangas y bajo.
Refuerzo de hombro a hombro.
100% algodón cardado preencogido.

Gramaje: 190 gr.
Tallas: XS / S / M / L / XL / XXL / 3XL
3XL - XS: (BK, NY, RB, RD, GM, SY, WH)

Adult short sleeve T-shirt. Tubular fabric.
Lycra rib neck.
Double stitch on collar, sleeves and bottom.
Shoulder to shoulder tape.
100% preshrunk carded cotton.

Weight: 190 gsm.
Sizes: XS / S / M / L / XL / XXL / 3XL
3XL - XS: (BK, NY, RB, RD, GM, SY, WH)



 BK BLACK	 WH WHITE	 SA SAND	
 NY NAVY	 BU BURGUNDY	 FG FOREST GREEN	
 RB ROYAL BLUE	 RP RASPBERRY	 KH KHAKE	
 AZ AZZURE	 PK PINK	 PG PALE GREEN	
 TU TURQUOISE	 RD RED	 KG KELLY GREEN	
 PU PURPLE	 OR ORANGE	 PT PISTACHIO	
 LV LAVANDER	 PH PEACH	 GM GREY MELANGE	
 SK SKY BLUE	 CH CHOCOLATE	 AS ASH	
		 GF GRAPHITE	



Regular Polo

REF. PORA 200



Polo manga corta. Tejido en nido de abeja.
Tapeta con dos botones.
Bocamanga y cuello en canalé.
Aberturas laterales.
100% algodón peinado preencogido.

Gramaje: 200 - 210 gr.
Tallas: S / M / L / XL / XXL / 3XL
3XL: (WH, BK, RD, NY, RB)

Adult short sleeve polo shirt.
Honey combed fabric.
Two button placket. 1x1 Rib collar and cuffs.
Side Slits.
100% preshrunk combed cotton.

Weight: 200 - 210 gsm.
Sizes: S / M / L / XL / XXL / 3XL
3XL: (WH, BK, RD, NY, RB)



 BK BLACK	 CH CHOCOLATE
 NY NAVY	 SA SAND
 RB ROYAL BLUE	 FG FOREST GREEN
 AZ AZZURE	 KH KHAKI
 SK SKY BLUE	 PG PALE GREEN
 PU PURPLE	 KG KELLY GREEN
 LV LAVANDER	 LM LIME
 WH WHITE	 SY GOLD
 BU BURGUNDY	 LY LIGHT YELLOW
 RD RED	 GF GRAPHITE
 FU FUCSIA	 AS ASH
 PK PINK	 new colors '10 nuevos colores '10
 OR ORANGE	 WR WARM RED
 PH PEACH	





Polo Piqué Lady

REF. POPL 200



Polo chica manga corta en piqué.
Ligeramente entallado.
Tapeta con 3 botones.
Bocamanga y cuello en canalé.
Aberturas laterales.
100% algodón peinado preencogido.

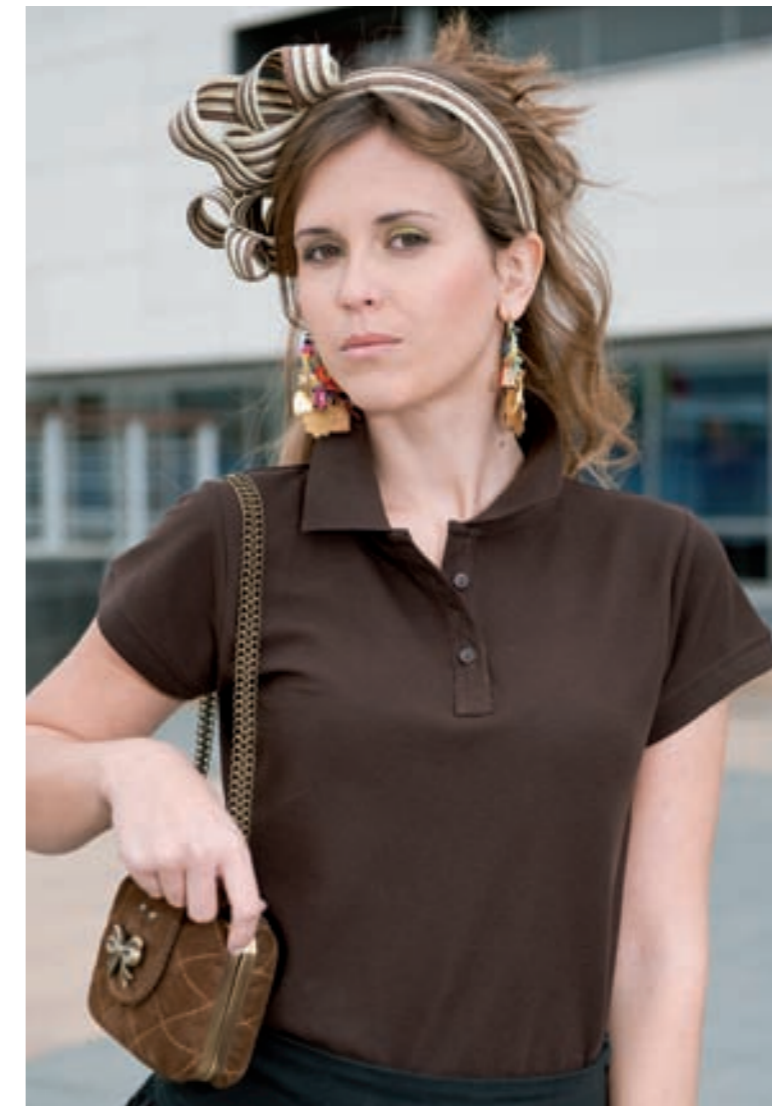
Gramaje: 200 gr.
Tallas: S / M / L / XL

Ladies short sleeve polo.
Body fitted. Piqué fabric.
Three buttons placket.
1x1 Rib collar and cuffs.
Side slits.
100% preshrunk combed cotton.

Weight: 200 gsm.
Sizes: S / M / L / XL



-  BK
BLACK
-  NY
NAVY
-  SK
SKY BLUE
-  WH
WHITE
-  RP
RASPBERRY
-  PK
PINK
-  RD
RED
-  OR
ORANGE
-  CH
CHOCOLATE
-  KH
KHAKE
-  SY
GOLD



- new colors '10**
nuevos colores '10
-  RB
ROYAL BLUE
 -  LM
LIME



Polo Piqué 220

REF. PIQUE 220










Polo piqué manga corta tallaje más ajustado.
Cuello doble reforzado en canalé y nueva tapeta.
100% algodón preencogido.

Gramaje: 220 gr.
Tallas: S / M / L / XL / XXL

Piqué polo shirt fitted sizing.
Double reinforced rib collar and new placket.
100% preshrunk cotton.

Weight: 220 gsm.
Sizes: S / M / L / XL / XXL



-  BK
BLACK
-  NY
NAVY
-  RB
ROYAL BLUE
-  SK
SKY BLUE
-  WH
WHITE
-  RD
RED
-  OR
ORANGE

Worker Polo

REF. PORA 180 WK

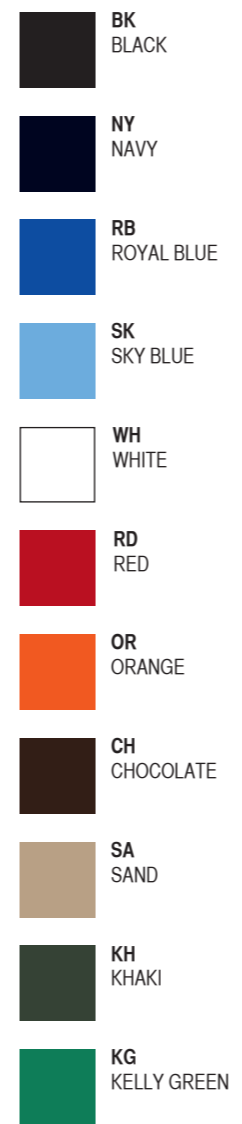
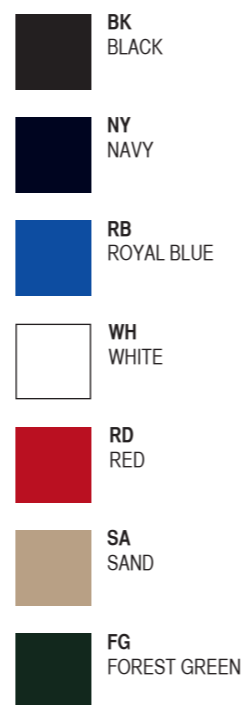


Polo manga corta. Tapeta con dos botones.
Bocamanga y cuello en canalé.
Aberturas laterales.
65% poliéster - 35% algodón.

Gramaje: 180 gr.
Tallas: S / M / L / XL / XXL

Adult short sleeve polo. Two button placket.
1x1 Rib cuffs and collar.
Side slits.
65% polyester - 35% cotton.

Weight: 180 gsm.
Sizes: S / M / L / XL / XXL



new colors '10
nuevos colores '10



Regular Polo LS

REF. PORA 200 LS



Polo de manga larga con puños.
Tejido en nido de abeja.
Tapeta con dos botones.
Aberturas laterales y faldon trasero.
100% algodón peinado preencogido.

Gramaje: 200 - 210 gr.
Tallas: S / M / L / XL / XXL

Long sleeve polo with cuffs.
Honey combed fabric.
Two button placket.
Side slits and back tail.
100% preshrunk combed cotton.

Weight: 200 - 210 gsm.
Sizes: S / M / L / XL / XXL



Regular T-Shirt LS

REF. TSRA 150 LS



Camiseta manga larga sin puños.
Doble costura en puños y bajo.
Refuerzo de hombro a hombro. Cuello lycra.
100% algodón preencogido.

Gramaje: 150 - 155 gr.
Tallas: S / M / L / XL / XXL

Adult long sleeve T-shirt without cuffs.
Double stitch on sleeves and bottom.
Shoulder to shoulder tape.
Lycra rib neck. 100% preshrunk cotton.

Weight: 150 - 155 gsm.
Sizes: S / M / L / XL / XXL



(Agosto/August 2010)

Regular Lady LS

REF. TSRL 150 LS



Camiseta chica manga larga sin puños.
Doble costura en puños y bajo.
Cuello canalé 1x1.
100% algodón preencogido.

Gramaje: 150 - 155 gr.
Tallas: S / M / L / XL

Ladies long sleeve T-shirt without cuffs.
Double stitch on sleeves and bottom.
1x1 rib neck. 100% preshrunk cotton.

Weight: 150 - 155 gsm.
Sizes: S / M / L / XL



-  **BK**
BLACK
(Agosto/August 2010)
-  **NY**
NAVY
(Agosto/August 2010)
-  **WH**
WHITE
(Agosto/August 2010)
-  **RD**
RED
(Agosto/August 2010)

-  **BK**
BLACK
-  **NY**
NAVY
-  **RB**
ROYAL BLUE
-  **WH**
WHITE
-  **RD**
RED
-  **CH**
CHOCOLATE
-  **KH**
KHAKI
-  **GM**
GREY
MELANGE
-  **WR**
WARM RED
(Agosto/August 2010)

new colors '10
nuevos colores '10

Lady Polo

REF. PORL 220



Polo chica sin mangas.
Tejido en nido de abeja.
Tapeta con 3 botones.
Sisa y cuello en canalé. Aberturas laterales.
100% algodón peinado preencogido.

Gramaje: 220 gr.
Tallas: S / M / L / XL

Ladies sleeveless polo shirt.
Honey combed fabric.
Three buttons placket.
1x1 Rib armhole and collar. Side slits.
100% preshrunk combed cotton.

Weight: 220 gsm.
Sizes: S / M / L / XL



Lady Polo CS

REF. POUL 220



Polo chica manga corta.
Tapeta con 3 botones.
Canalé 1x1.
100% algodón peinado preencogido.

Gramaje: 220 gr.
Tallas: S / M / L / XL

Ladies short sleeve polo.
Three button placket.
1x1 Rib.
100% preshrunk combed cotton

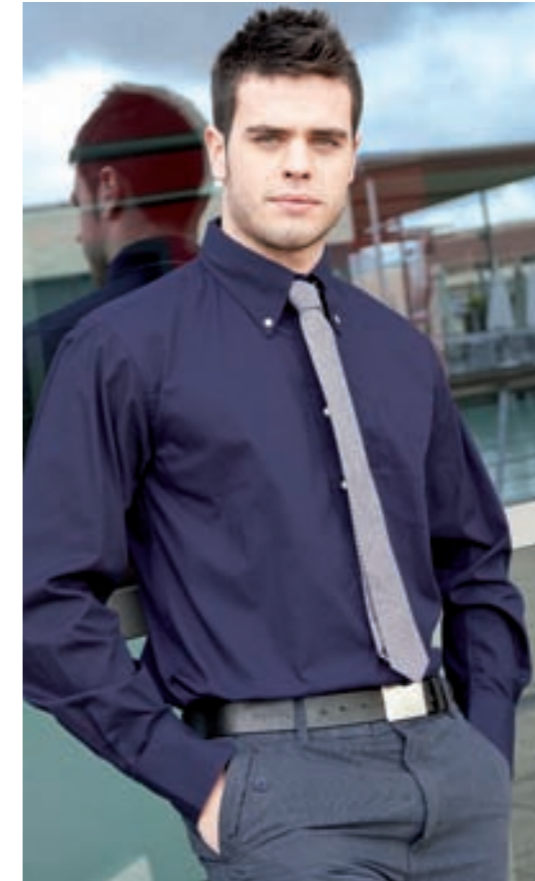
Weight: 220 gsm.
Sizes: S / M / L / XL





Regular Shirt

REF. SHRA CASUAL



Camisa manga larga. Botones en cuello. Bolsillo delantero. Oxford: 60% algodón - 40% poliéster. Popelín: 100% algodón.

Tallas: S / M / L / XL / XXL

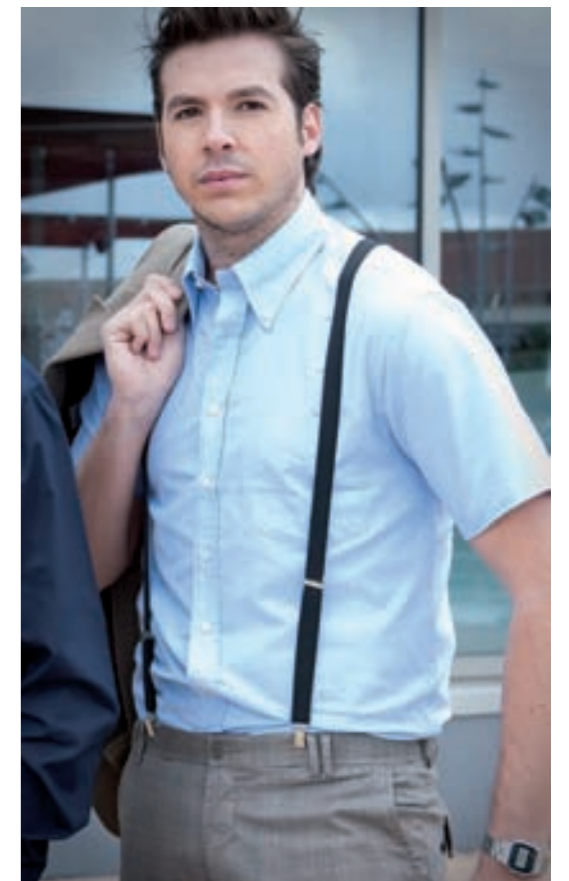
Long sleeve shirt. Button down the collar. Front pocket. Oxford: 60% cotton - 40% polyester. Poplín: 100% cotton.

Sizes: S / M / L / XL / XXL

-  BK
BLACK
-  NY
NAVY
-  RD
RED
-  OXFORD WH
OXFORD
WHITE
-  OXFORD LB
OXFORD
LIGHT BLUE
-  OXFORD PK
OXFORD PINK

Regular Shirt SS

REF. SHRA S/S



Camisa manga corta. Botones en cuello. Bolsillo delantero. Oxford: 60% algodón - 40% poliéster.

Tallas: S / M / L / XL / XXL

Short sleeve shirt. Button down the collar. Front pocket. Oxford: 60% cotton - 40% polyester.

Sizes: S / M / L / XL / XXL

-  OXFORD WH
OXFORD WHITE
-  OXFORD LB
OXFORD
LIGHT BLUE
-  new colors '10
nuevos colores '10
-  OXFORD BK
OXFORD BLACK

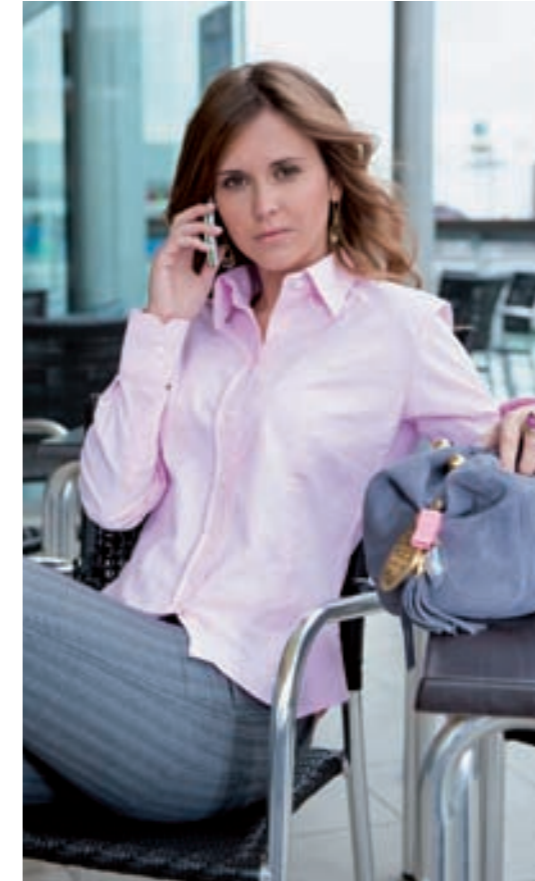




Regular Shirt Lady

REF. SHRL LADY

- BK
BLACK
- NY
NAVY
- RD
RED
- OXFORD WH
OXFORD
WHITE
- OXFORD LB
OXFORD
LIGHT BLUE
- OXFORD PK
OXFORD PINK



Camisa manga larga.
Ligeramente entallada.
Oxford: 60% algodón - 40% poliéster.
Popelín: 100% algodón.

Tallas: S / M / L / XL

Ladies long sleeve shirt. Body fitted.
Oxford: 60% cotton - 40% polyester.
Poplín: 100% cotton.

Sizes: S / M / L / XL

Regular Shirt Lady SS

REF. SHRL LADY S/S

- OXFORD WH
OXFORD
WHITE
- OXFORD SK
OXFORD
LIGHT BLUE
- new colors '10**
nuevos colores '10
OXFORD BK
OXFORD
BLACK



Camisa manga corta.
Ligeramente entallada.
Oxford: 60% algodón - 40% poliéster.

Tallas: S / M / L / XL

Ladies short sleeve shirt. Body fitted.
Oxford: 60% cotton - 40% polyester.

Sizes: S / M / L / XL





Sweatshirt

REF. SWRA 280















Sudadera corte recto.
Doble costura en cuello, mangas y bajo.
Canalé con lycra en cuello, puños y bajo.
80% algodón - 20% poliéster.

Gramaje: 280 gr.
Tallas: S / M / L / XL / XXL

Sweatshirt.
Double stitch on collar, sleeves and bottom.
Lycra rib on collar, cuffs and bottom.
80% cotton - 20% polyester.

Weight: 280 gsm.
S / M / L / XL / XXL




-  BK
BLACK
-  NY
NAVY
-  RB
ROYAL BLUE
-  WH
WHITE
-  BU
BURGUNDY
-  RD
RED
-  FG
FOREST GREEN
-  KH
KHAKI
-  GM
GREY
MELANGE
-  OR
ORANGE
-  new colors '10
nuevos colores '10
-  BG
BOTTLE GREEN
(Agosto/August 2010)



Hooded Sweater

REF. SWUA HOOD

-  BK
BLACK
-  NY
NAVY
-  RD
RED
-  GM
GREY
MELANGE
-  KH
KHAKE



Sudadera con capucha.
Cordón de ajuste a tono.
Cremallera entera. Bolsillo canguro.
1X1 canalé con lycra en puños y bajo.
80% algodón - 20% poliéster.








Gramaje: 280 gr.
Tallas: S / M / L / XL / XXL

Hooded sweater. Matched colour drawcord.
Full zip. Kangaroo pocket.
1x1 Rib with lycra in cuffs and waistband.
80% cotton - 20% polyester.

Weight: 280 gsm.
Sizes: S / M / L / XL

Hooded Sweater Lady

REF. SWUL 300

-  BK
BLACK
-  SK
SKY BLUE
-  PK
PINK
-  WH
WHITE
-  RD
RED
-  CH
CHOCOLATE
-  AS
ASH

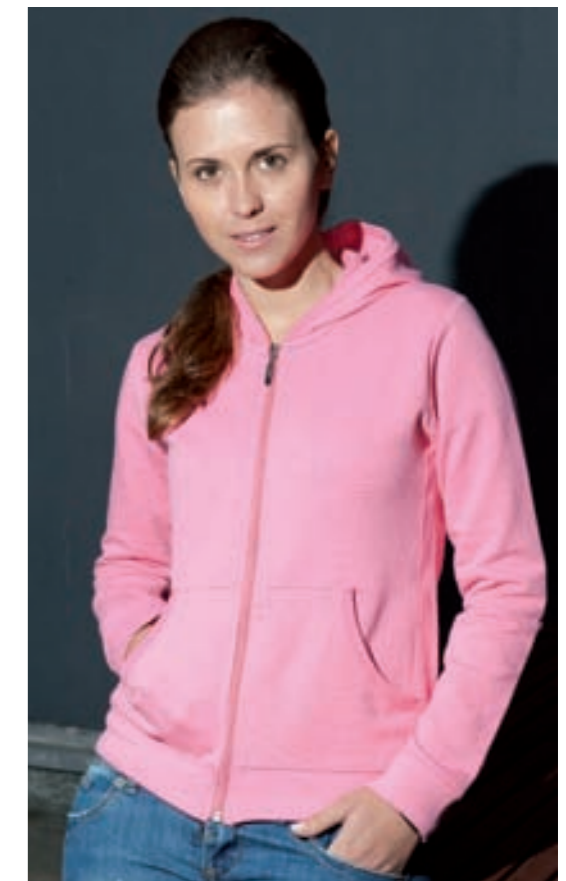


Sudadera de chica con capucha.
Cremallera entera.
Bolsillos canguro. Canalé 1X1 en puños y bajo.
100% algodón.

Gramaje: 300 gr.
Tallas: S / M / L / XL

Hooded lady sweatshirt. Full zip.
Kangaroo pocket.
1x1 Rib cuffs and waistband.
100% cotton.

Weight: 280 gsm.
Sizes: Tallas: S / M / L / XL



Half Zip Sweatshirt

REF. SWRA ZIP



Sudadera con media cremallera.
1 x1 canale con lycra en puños y bajo
80% algodón - 20% poliéster.

Gramaje: 280 gr.
Tallas: S / M / L / XL / XXL

Half zip sweatshirt.
1 x 1 lycra rib in cuffs and waistband
80% cotton - 20% polyester.

Weight: 280 gsm.
Sizes: S / M / L / XL / XXL



Polar Fleece

REF. FLRA 300



Forro polar. Cremallera entera y bolsillos laterales.
Acabado micropolar antipilling.
Cordón de ajuste con topes.
100% poliéster.

Gramaje: 300 gr.
Tallas: XS / S / M / L / XL / XXL

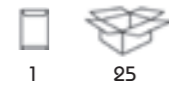
Polar Fleece. Full zip and side pockets.
Micro polar fleece with antipill finishing.
Drawstring with stoppers.
100% polyester.

Weight: 300 gsm.
Sizes: XS / S / M / L / XL / XXL



Dakota Jacket

REF. JCUA DAKOTA

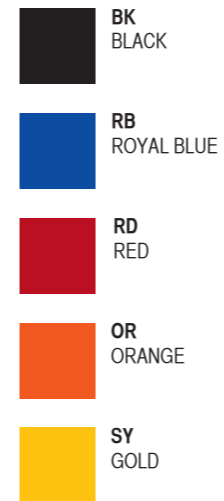


Chaqueta con capucha. Cremallera entera.
Bolsillos laterales. Interior acolchado. Nylon.

Tallas: S / M / L / XL

Hooded jacket. Full zip.
Side pocket. Padded lining.
Nylon.

Sizes: S / M / L / XL



Windbreaker

REF. JCUA WIND



Cortavientos. Bolsillos laterales.
Bolsa incorporada para guardarlo.
Abertura posterior para transpiración.
100% poliéster.

Tallas: XS / S / M / L / XL / XXL

Windbreaker.
Side pockets. Integrated bag to fold it.
Back opened area to perspirate.
100% polyester.

Sizes: XS / S / M / L / XL / XXL





Baby

REF. TSB 150















Camiseta de bebé manga corta.
Costuras laterales. Cuello lycra.
Refuerzo de hombro a hombro.
100% algodón cardado preencogido.

Babies short sleeve T-shirt.
Lycra rib neck. Side seams on body.
Shoulder to shoulder tape.
100% preshrunk carded cotton

Gramaje: 150 - 155 gr.
Tallas: 0 / 1 / 2

Weight: 150 - 155 gsm.
Sizes: 0 / 1 / 2



-  **BK**
BLACK
-  **RB**
ROYAL BLUE
-  **SK**
SKY BLUE
-  **WH**
WHITE
-  **PK**
PINK
-  **RD**
RED
-  **OR**
ORANGE
-  **LM**
LIME
-  **LY**
LIGHT YELLOW
- new colors '10**
nuevos colores '10
-  **TU**
TURQUOISE
-  **FU**
FUCSIA
-  **PT**
PISTACHIO





Kid T-Shirt

REF. TSRK 150



Camiseta infantil manga corta.
Costuras laterales. Cuello de lycra.
Doble costura en cuello, mangas y bajo.
Refuerzo de hombro a hombro.
100% algodón cardado preencogido.

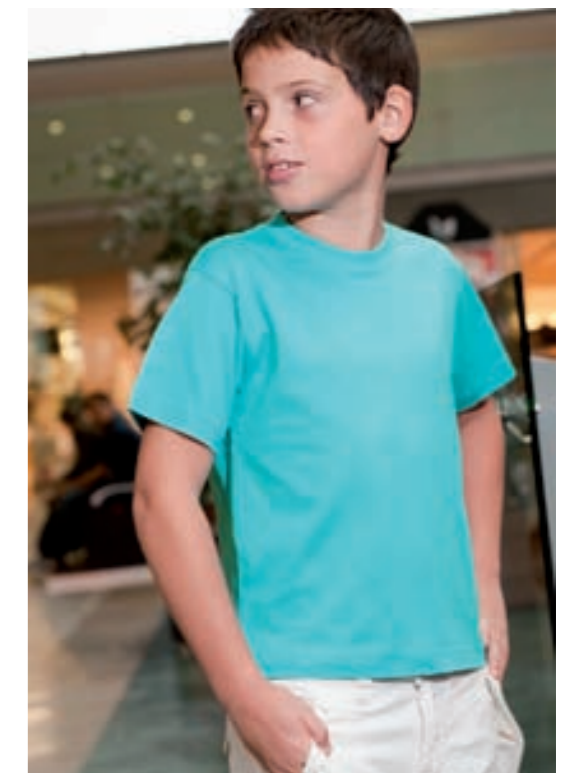
Gramaje: 150 - 155 gr.
Tallas: 3-4 / 5-6 / 7-8 / 9-11 / 12-14

Kids short sleeve T-shirt.
Side seams on body. Lycra rib neck.
Double stitch on collar, sleeves and bottom.
Shoulder to shoulder tape.
100% preshrunk carded cotton

Weight: 150 - 155 gsm.
Sizes: 3-4 / 5-6 / 7-8 / 9-11 / 12-14



	BK BLACK		OR ORANGE
	NY NAVY		PH PEACH
	DN DENIM		BR BROWN
	RB ROYAL BLUE		SA SAND
	AZ AZZURE		FG FOREST GREEN
	TU TURQUOISE		BG BOTTLE GREEN
	SK SKY BLUE		KH KHAKI
	IB ICE BLUE		AR ARMY
	WH WHITE		KG KELLY GREEN
	BU BURGUNDY		LM LIME
	FU FUCSIA		PT PISTACHIO
	PK PINK		SY GOLD
	RD RED		LY LIGHT YELLOW
	BC BRICK		GM GREY MELANGE



AS
ASH MELANGE

new colors '10
nuevos colores '10

WR
WARM RED

PU
PURPLE



Kid Premium T-Shirt

REF. TSRK 190



Camiseta infantil manga corta.
Costuras laterales. Cuello de lycra.
Doble costura en cuello, mangas y bajo.
Refuerzo de hombro a hombro.
100% algodón cardado preencogido.

Gramaje: 190 gr.
Tallas: 3-4 / 5-6 / 7-8 / 9-11 / 12-14

Kids short sleeve T-shirt.
Side seams on body. Lycra rib neck.
Double stitch on collar, sleeves and bottom.
Shoulder to shoulder tape.
100% preshrunk carded cotton.

Weight: 190 gsm.
Sizes: 3-4 / 5-6 / 7-8 / 9-11 / 12-14



-  BK
BLACK
-  NY
NAVY
-  RB
ROYAL BLUE
-  TU
TURQUOISE
-  SK
SKY BLUE
-  WH
WHITE
-  PK
PINK
-  RD
RED
-  OR
ORANGE
-  SY
GOLD
-  AS
ASH



Kid Polo

REF. PKID 200

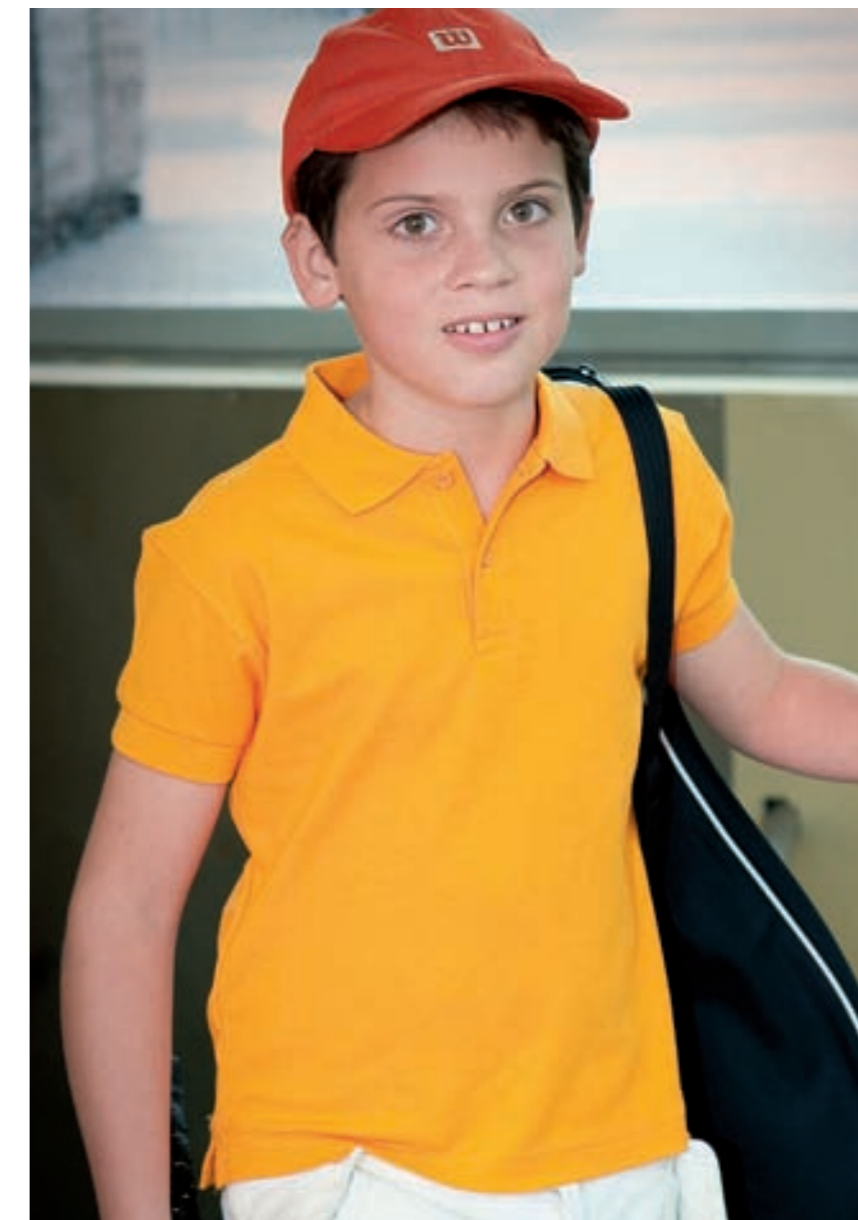



Polo infantil manga corta. Tejido en nido de abeja.
Tapeta con dos botones.
Bocamanga y cuello en canalé.
Aberturas laterales.
100% algodón peinado preencogido.

Gramaje: 200 - 210 gr.
Tallas: 3-4 / 5-6 / 7-8 / 9-11 / 12 -14

Kids short sleeve polo shirt.
Honey combed fabric.
Two buttons placket.
1x1 Rib cuffs and collar. Side slits.
100% preshrunk combed cotton.

Weight: 200 - 210 gsm.
Sizes: 3-4 / 5-6 / 7-8 / 9-11 / 12 -14



-  BK
BLACK
-  NY
NAVY
-  RB
ROYAL BLUE
-  SK
SKY BLUE
-  WH
WHITE
-  BU
BURGUNDY
-  PK
PINK
-  RD
RED
-  PH
PEACH
-  FG
FOREST GREEN
-  KG
KELLY GREEN
-  LM
LIME
-  SY
GOLD
-  LY
LIGHT YELLOW

Kid T-Shirt LS

REF. TSRK 150 LS



Camiseta infantil manga larga.
Costuras laterales. Cuello de lycra.
Doble costura en cuello, mangas y bajo.
Refuerzo de hombro a hombro.
100% Algodón cardado preencogido.

Gramaje: 150 - 155 gr.
Tallas: 3-4 / 5-6 / 7-8 / 9-11 / 12 -14

Kids long sleeve T-shirt.
Side seams on body. Lycra rib neck.
Double stitch on collar, sleeves and bottom.
Shoulder to shoulder tape.
100% preshrunk carded cotton.

Weight: 150 - 155 gsm.
Sizes: 3-4 / 5-6 / 7-8 / 9-11 / 12 -14



- BK
BLACK
- NY
NAVY
- RB
ROYAL BLUE
- SK
SKY BLUE
- WH
WHITE
- RD
RED
- GM
GREY
MELANGE
- new colors '10**
nuevos colores '10
- PK
PINK
(Agosto/August 2010)

REGULAR LINE

44



Kid Polo LS

REF. PKID 200 LS



Polo infantil manga larga con puño.
Tejido en nido de abeja.
Tapeta con dos botones. Cuelló en canalé.
Aberturas laterales.
100% algodón peinado preencogido.

Gramaje: 200 - 210 gr.
Tallas: 3-4 / 5-6 / 7-8 / 9-11 / 12 -14

Kids long sleeve polo with cuffs.
Honey combed fabric.
Two buttons placket.
1x1 Rib collar and cuffs. Side slits.
100% preshrunk combed cotton.

Weight: 200 - 210 gsm.
Sizes: 3-4 / 5-6 / 7-8 / 9-11 / 12 -14



- BK
BLACK
- NY
NAVY
- RB
ROYAL BLUE
- RD
RED
- SK
SKY BLUE
- WH
WHITE

REGULAR LINE

45

Kid Sweatshirt

REF. SWRK 280




Sudadera infantil.
Doble pespunte en cuello, mangas y bajo.
Canalé con lycra en cuello, puños y bajo.
80% algodón - 20% poliéster.

Gramaje: 280 gr.
Tallas: 3-4 / 5-6 / 7-8 / 9-11 / 12 -14

Kids sweatshirt.
Double stich on collar, sleeves and bottom
1x1 Rib neck with Lycra in cuffs and
waistband.
80% cotton - 20 % polyester

Weight: 280 gsm.
Sizes: 3-4 / 5-6 / 7-8 / 9-11 / 12 -14



-  NY NAVY
-  SK SKY BLUE
-  WH WHITE
-  RD RED
-  PH PEACH
-  **new colors '10**
nuevos colores '10
-  BG BOTTLE GREEN
(Agosto/August 2010)



Kid Polar Fleece

REF. FLRK 300






Forro polar infantil.
Cremallera entera y bolsillos laterales
con cremallera.
Acabado micropolar antipiling.
Cordón de ajuste con topes.
100% poliéster.

Gramaje: 300 gr.
Tallas: 3-4 / 5-6 / 7-8 / 9-11 / 12 -14

Kids polar fleece.
Full zip and side pockets with zip.
Micro polar fleece with antipill finishing.
Drawstring with stoppers.
100% polyester.

Weight: 300 gsm.
Sizes: 3-4 / 5-6 / 7-8 / 9-11 / 12 -14



-  NY NAVY
-  SK SKY BLUE
-  RD RED



Urban 150

REF. TSUA 150

-  BK
BLACK
-  NY
NAVY
-  WH
WHITE
-  RD
RED
-  CH
CHOCOLATE
-  KH
KHAKE
-  GF
GRAPHITE
-  GM
GREY
MELANGE



Camiseta de chico manga corta. Entallada y ligeramente más corta. Refuerzo de hombro a hombro. Cuello lycra. 100% algodón cardado preencogido.

Gramaje: 150 - 155 gr.
Tallas: S / M / L / XL / XXL

Men short sleeve T-shirt. Body fit. Shoulder to shoulder tape. Lycra rib 100% preshrunk carded cotton.

Weight: 150 - 155 gr.
Sizes: S / M / L / XL / XXL

Urban 150 V-neck

REF. TSUA PICO

-  BK
BLACK
-  NY
NAVY
-  WH
WHITE
-  RD
RED
-  GM
GREY
MELANGE



Camiseta de chico con cuello de pico. Refuerzo de hombro a hombro. Cuello lycra. 100% algodón cardado preencogido.

Gramaje: 150 - 155 gr.
Tallas: S / M / L / XL / XXL

V-Neck T-shirt. Shoulder to shoulder tape. Lycra V-neck. 100% preshrunk carded cotton.

Weight: 150 - 155 gr.
Sizes: S / M / L / XL / XXL



World Cup

REF. TSUA WCUP



Camiseta con doble cuello y mangas.
Color contraste en cuello y mangas. Punto liso.
100% algodón cardado preencogido.

Gramaje: 150 - 155 gr.
Tallas: XS / S / M / L / XL / XXL

T-shirt with double neck and sleeves.
Jersey with contrast rib on collar and cuffs.
100% preshrunk carded cotton.

Weight: 150 - 155 gr.
Sizes: XS / S / M / L / XL / XXL



-  **NY/WH**
NAVY/ WHITE
-  **RB/WH**
ROYAL BLUE/
WHITE
-  **RB/RD/WH**
ROYAL BLUE/
RED/WHITE
-  **SK/WH**
SKY BLUE/
WHITE
-  **WH/BK**
WHITE/ BLACK
-  **WH/NY**
WHITE/NAVY
-  **WH/SK**
WHITE/SKY
BLUE
-  **WH/RD**
WHITE/RED
-  **RD/WH**
RED/WHITE
-  **RD/SY**
RED/GOLD
-  **RD/KG**
RED/KELLY
GREEN
-  **OR/WH**
ORANGE/
WHITE
-  **SY/RD**
GOLD/RED
-  **SY/KG**
GOLD/KELLY
GREEN



Urban Sport

REF. TSUA SPORT





Camiseta deportiva manga raglan con
costura decorativa en media manga.
100% poliéster

Gramaje: 130 gr.
Tallas: S / M / L / XL / XXL

Performance t-shirt.
Raglan sleeve, with decorative stitching on it.
100% polyester.

Weight: 130 gr.
Sizes: S / M / L / XL / XXL



-  **BK**
BLACK
-  **WH**
WHITE

URBAN LINE

50

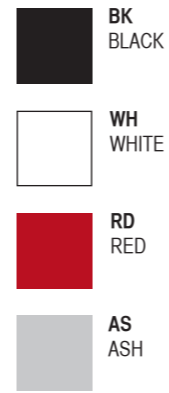
URBAN LINE

51



Urban Training

REF. TSUA TRN

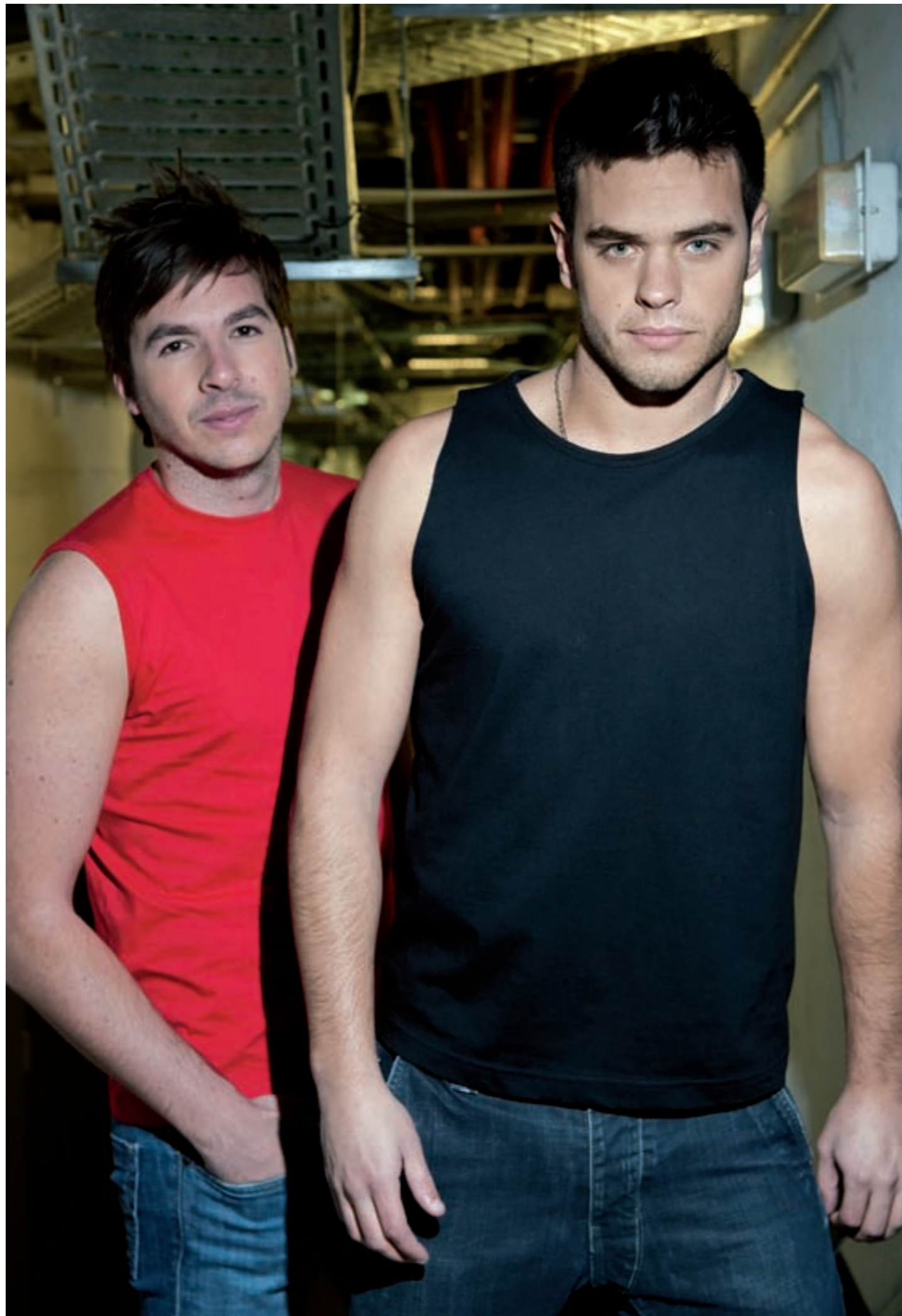


Camiseta de chico sin mangas. Refuerzo de hombro a hombro. Cuello lycra. 100% algodón cardado preencogido.

Gramaje: 150 - 155 gr.
Tallas: S / M / L / XL XXL

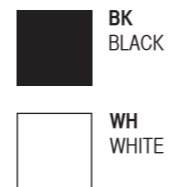
Men sleeveless T-shirt. Shoulder to shoulder tape. Lycra rib. 100% preshrunk carded cotton.

Weight: 150 -155 gr.
Sizes: S / M / L / XL XXL



Urban Strap

REF. TSUA STRP

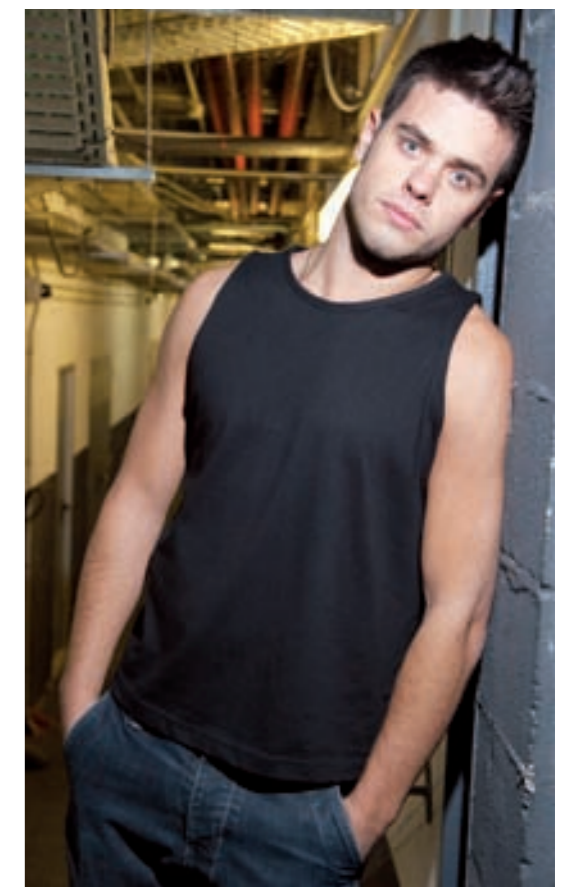


Camiseta de chico de tirantes. Punto liso. 100% algodón cardado preencogido.

Gramaje: 150 - 155 gr.
Tallas: S / M / L / XL / XXL

Men tank top. Single jersey. 100% preshrunk carded cotton.

Weight: 150 - 155 gr.
Sizes: S / M / L / XL / XXL



Aruba

REF. TSUL ARB



Camiseta de chica de tirantes.
Espalda diseño natación.
Canalé 1X1. 100% algodón cardado

Gramaje: 200 gr.
Tallas: S / M / L / XL

Ladies t-back swimming style.
1x1 Rib. 100% carded cotton.

Weight: 200 gr.
Sizes: S / M / L / XL



Samoa

REF. TSUL SAM



Camiseta de chica de doble tirante
100% algodón.

Gramaje: 140 - 145 gr.
Tallas: S / M / L / XL

Ladies T-shirt with double strap.
100% cotton.

Weight: 140 - 145 gr.
Sizes: S / M / L / XL



URBAN LINE

54

URBAN LINE

55



Madeira

REF. TSUL 260

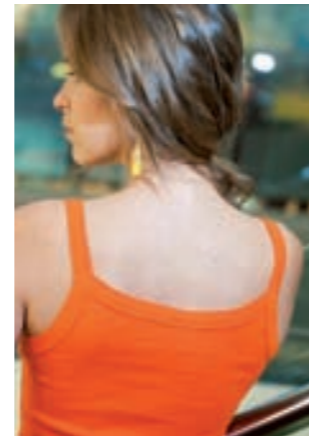


Camiseta de chica de tirantes finos. Canalé 1X1
100% Algodón cardado.

Gramaje: 230 gr.
Tallas: U

Ladies T-shirt with straps.
1x1 Rib. 100% carded cotton.

Weight: 230 gr.
Sizes: U



- BK BLACK
- SK SKY BLUE
- WH WHITE
- PK PINK
- KH KHAKI
- LM LIME
- OR ORANGE
- LY LIGHT YELLOW

URBAN LINE

56

Bahamas

REF. TSUL BAH



Camiseta de chica. Tirante ancho.
Canalé 2X1. 100% algodón peinado.

Gramaje: 220 gr.
Tallas: S / M / L / XL

Ladies T-shirt. Wide strap.
2x1 Rib. 100% combed cotton.

Weight: 220 gr.
Sizes: S / M / L / XL



- BK BLACK
- NY NAVY
- DN DENIM
- AZ AZZURE
- SK SKY BLUE
- WH WHITE
- FU FUCSIA
- PK PINK
- RD RED
- OR ORANGE
- LM LIME
- PT PISTACHIO



URBAN LINE

57

Basic Girl

REF. TSUL BSG



Camiseta de chica con lycra.
92% algodón peinado, 8% lycra.

Gramaje: 240 gr.
Tallas: S / M / L / XL

Ladies T-shirt lycra.
92% combed cotton 8% lycra.

Weight: 240 gr.
Sizes: S / M / L / XL



- BK BLACK
- AZ AZZURE
- WH WHITE
- FU FUCSIA
- RD RED
- LM LIME

URBAN LINE

58

Malta

REF. TSUL 1 X1



Camiseta de chica manga corta. Canalé 1X1.
100% algodón cardado.

Gramaje: 230 gr.
Tallas: S / M / L / XL

Ladies T-shirt short sleeve.
1x1 Rib. 100% carded cotton.

Weight: 230 gr.
Sizes: S / M / L / XL



- BK BLACK
- SK SKY BLUE
- WH WHITE
- RD RED
- OR ORANGE
- KH KHAKI
- PT PISTACHIO
- LY LIGHT YELLOW



URBAN LINE

59

Creta

REF. TSUL CRT



Camiseta chica de manga corta.
Cuello redondo amplio.
Canalé 1X1. 100% algodón cardado.

Gramaje: 190 - 200 gr.
Tallas: S / M / L / XL

Ladies T-shirt cap sleeve. Wide cut neck.
1x1 Rib. 100% carded cotton.

Weight: Gramaje: 190 - 200 gr.
Sizes: S / M / L / XL



Jamaica

REF. TSUL JAM



Camiseta chica.
Cuello pico amplio delantero y posterior.
Punto liso. 100% algodón peinado.

Gramaje: 140 - 145 gr.
Tallas: S / M / L / XL

Ladies T-shirt. V-neck front and back.
Cap sleeve. Single jersey.
100% combed cotton.

Weight: 140 - 145 gr.
Sizes: S / M / L / XL



Sicilia

REF. TSUL SCL



Camiseta de chica con cuello pico.
Sin dobladillo en mangas y bajo.
100% algodón.

Gramaje: 140 - 145 gr.
Tallas: S / M / L / XL

Ladies V-neck T-shirt.
Unfinished sleeves and bottom.
100% cotton.

Weight: 140 - 145 gr.
Sizes: S / M / L / XL



Ibiza

REF. TSUL IBZ



Camiseta de chica manga corta.
Fruncido en pecho y espalda.
Sin dobladillo en mangas y bajo.
100% algodón.

Gramaje: 140 - 145 gr.
Tallas: S / M / L / XL

Ladies T-shirt cap sleeve.
Gathered in chest and back.
Unfinished sleeves and bottom.
100% cotton.

Weight: 140 - 145 gr.
Sizes: S / M / L / XL



